

# ∞ arabesque

## LIMONE 80

### ∞ CHARACTERISTICS

Dyed polyethylene (Compound).

Anti-UV treatment: UV-15 + antioxydant.

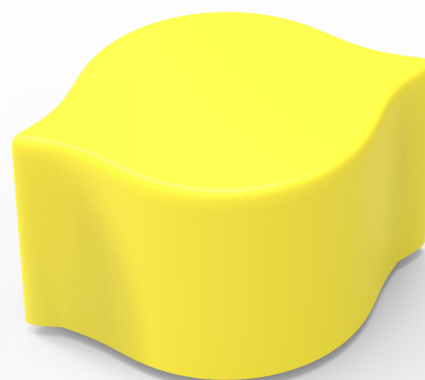
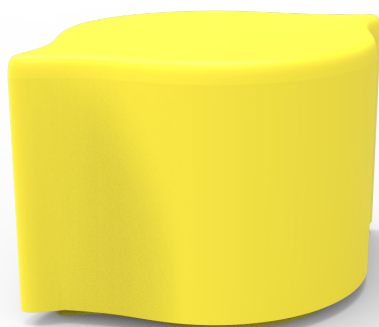
8 standard colors : white RAL 9003, light grey RAL 7044, beige RAL 1019, anthracite RAL 7022, yellow RAL 1018, orange RAL 2011, red RAL 3020, green Pantone 390C.

To fill with sand or water or to fix on the ground with brackets.

For 4 persons.

Single or to combine with Mezzo Limone, Limone Planter, Lungo left and right, Arco 42.

Option : fabric upholsterer.



### ∞ DIMENSIONS

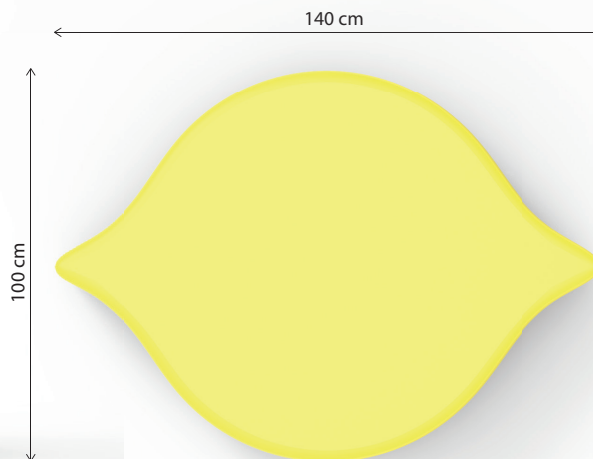
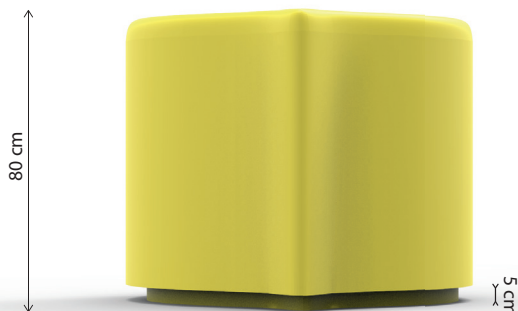
Length : 140 cm

Width : 100 cm

Height : 80 cm

Weight : 44 kg

Thickness : 10 mm



# ∞ COMBINATIONS

LIMONE 80 can be used as a back rest, a table or a standing seat.

